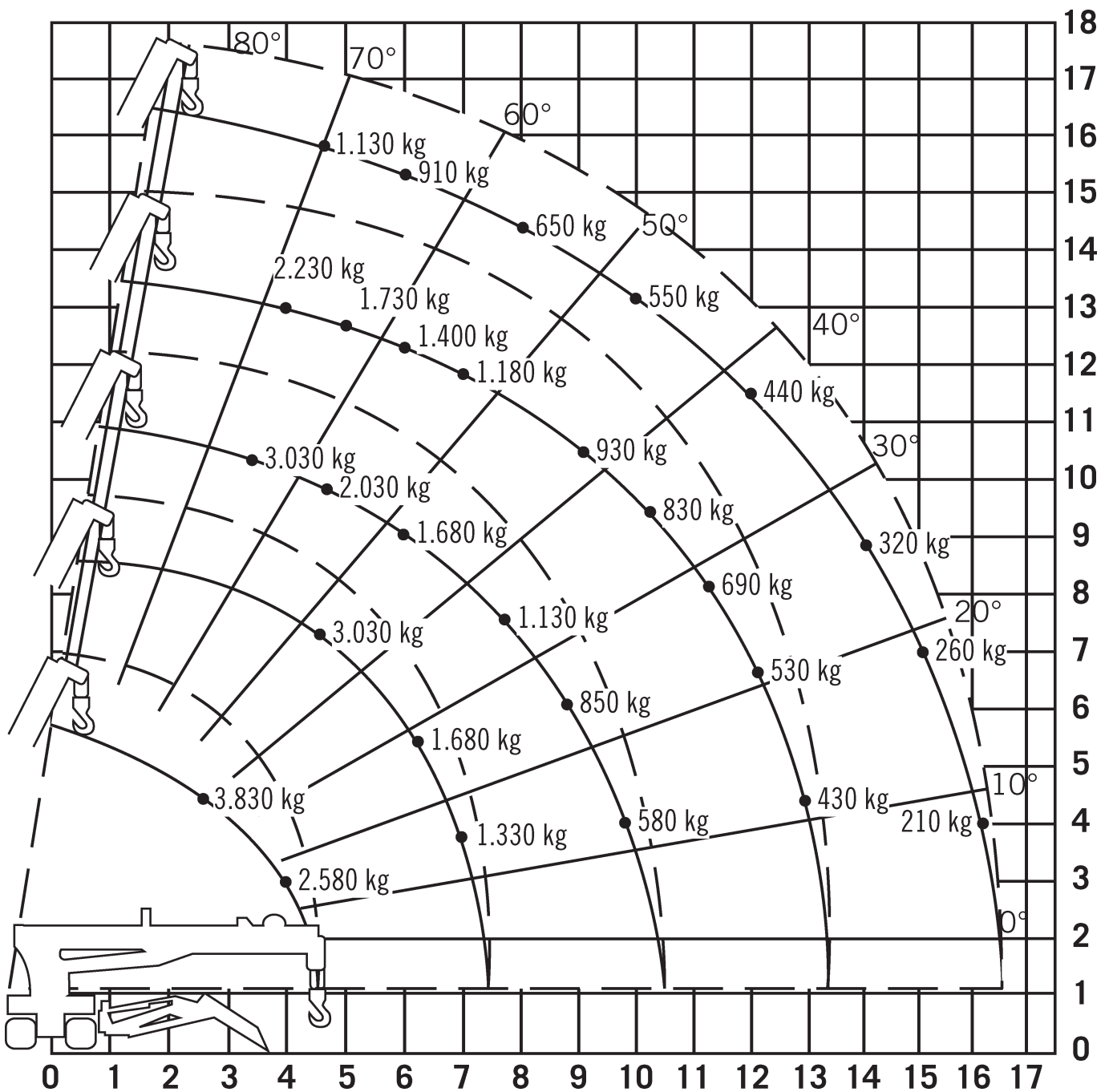


Dimensions in meters, weights and capacities in metric tonnes. For reference only.



2 Dimensions in meters, weights and capacities in metric tonnes. For reference only.


4,735-16,475m

fix

5,79x5,52m

360°

75%

m	4,735	7,695	10,655	13,565	16,475	m
<2,7	3,830	3,830				<2,7
3,5	3,030	3,030	3,030			3,5
4	2,580	2,580	2,580	2,230		4
4,5	2,030	2,030	2,030	1,930		4,5
5	2,030	2,030	2,030	1,730	1,130	5
5,5	1,680	1,680	1,680	1,400	0,980	5,5
6	1,680	1,680	1,680	1,400	0,910	6
7	1,380	1,380	1,380	1,180	0,760	7
7,25	1,330	1,330	1,130	1,030	0,650	7,25
8			1,130	1,030	0,650	8
9			0,880	0,930	0,600	9
10			0,580	0,830	0,550	10
10,2			0,580	0,690	0,490	10,2
11				0,690	0,490	11
12				0,530	0,440	12
13				0,430	0,380	13
14					0,320	14
15					0,260	15
16					0,210	16

maximum outrigger base

4 t**Maeda MC 405****nordicCrane**
GROUP**4,735-16,475m****fix****4,95x4,25m****360°****DIN****75%**

m	4,735	7,695	10,655	13,565	16,475	m
<2,7	3,830	3,830				<2,7
3,5	3,030	3,030	3,030			3,5
4	2,580	2,580	2,580	2,230		4
4,5	1,680	1,680	1,680	1,830		4,5
5	1,680	1,680	1,680	1,630	1,130	5
5,5	1,180	1,180	1,180	1,180	0,980	5,5
6	1,180	1,180	1,180	1,180	0,880	6
7	0,930	0,930	0,880	0,830	0,730	7
7,25	0,780	0,780	0,730	0,680	0,530	7,25
8			0,730	0,680	0,530	8
9			0,580	0,550	0,450	9
10			0,400	0,430	0,420	10
10,2			0,400	0,380	0,370	10,2
11				0,380	0,370	11
12				0,350	0,330	12
13				0,310	0,280	13
14					0,240	14
15					0,190	15
16					0,150	16

minimum outrigger base